

WARRANTY

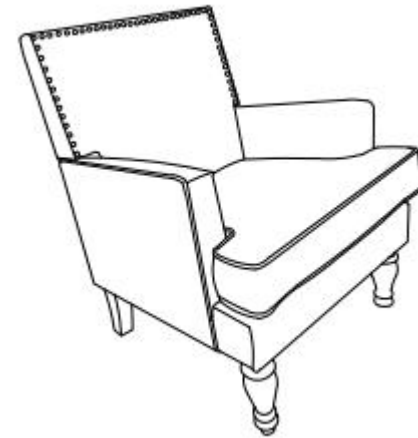
We strive to offer high-quality products, and we also try our best to satisfy each and every customer that orders from us with product or service as needed. We provide 30 days warranty starting from the time you receive the item. Each customer must provide a record of their order such as the order number, or item receipt for any items that are out of the warranty period you may also still receive replacement parts by purchasing them with our company if they are available.

**Are you having difficulty
with assembly? Missing parts?**

**Please send email with your order No
customerservice@hulalahome.com**

**For return, Please check the return policy with
the retailer or MarketPlace you bought from.**

**Appreciated your purchasing from us.
Pop up your life by our furniture piece!**



ITEM NO. HCHHL0144

NOTE:The wooden legs are in the pocket of the backing fabric

This brochure contains IMPORTANT safety info. Please read and keep for future reference.

MAINTAINANCE AND WARNING

- Keep furniture away from heat.
- Do not clean furniture with harsh cleansers or polish. Do not use detergents, Solvents, abrasives, spray packs or leather cleaner. Use non-color mild soap with warm water clean spills(Mix 1:10 soap to water)
- Do not place furniture under direct sunlight, material will possibly fade over time.
- Do not use on site dry Cleaning machine.
- Children should not climb or jump on the furniture.
- Do not write on furniture without a padded barrier to protect the surface.
- Not for commercial use, For residential use only.

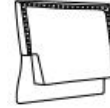


Weight Limitation

250LBS

PARTS LIST

A*1 BACKREST



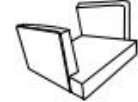
C*1 SEAT CUSHION



E*2 BACK LEG



B*1 SEAT FRAME



D*2 FRONT LEG



HARDWARE LIST

①*16

M6*25MM



②*1

5* 80MM



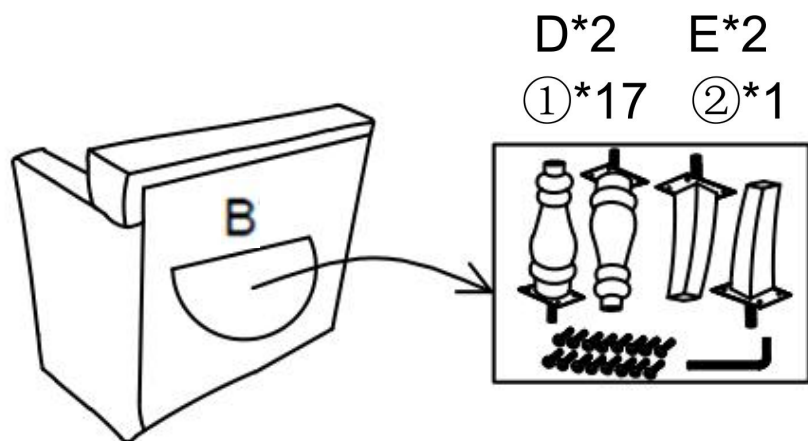
SPARE

①*1

M6* 25MM

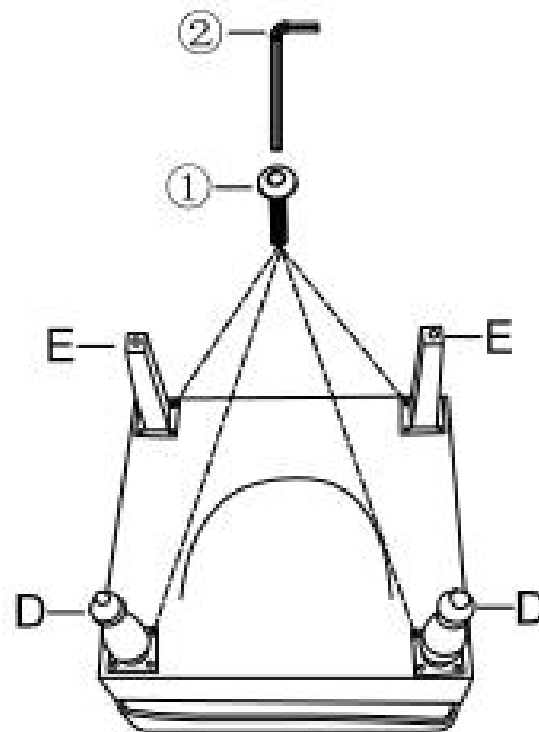


ASSEMBLY INSTRUCTIONS



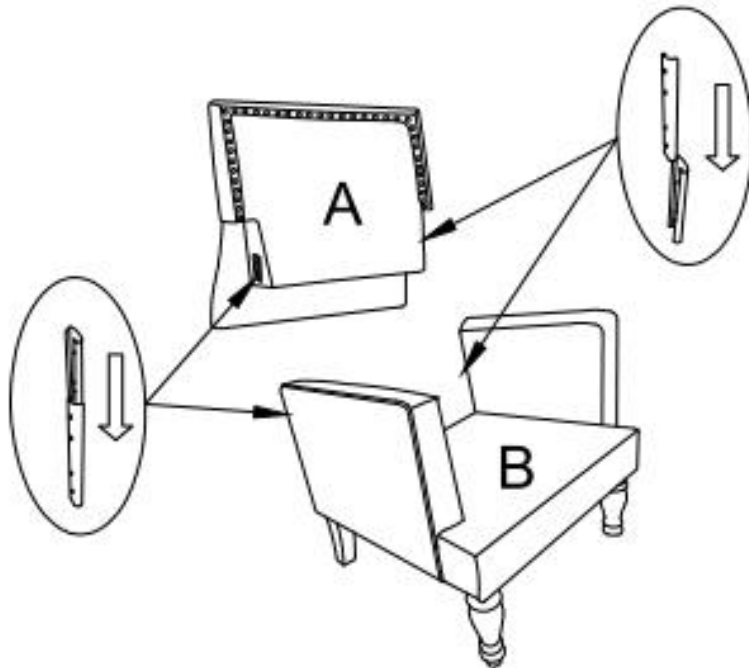
STEP 1: Take the wooden foot out of the bottom cloth pocket.

ASSEMBLY INSTRUCTIONS



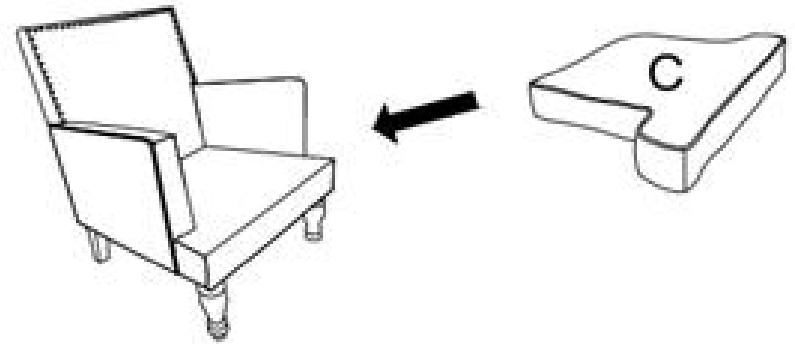
STEP 2: Align the hole of the iron sheet with the hole of the seat frame and tighten the screws with a hex wrench.

ASSEMBLY INSTRUCTIONS

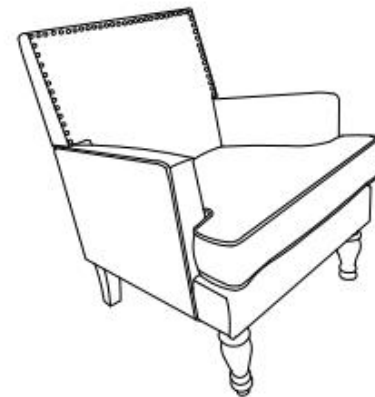


STEP 3: Align the backrest insert with the seat insert and press down.

ASSEMBLY INSTRUCTIONS



STEP 4: Put the cushion on.



STEP 5: Assembly completed.